

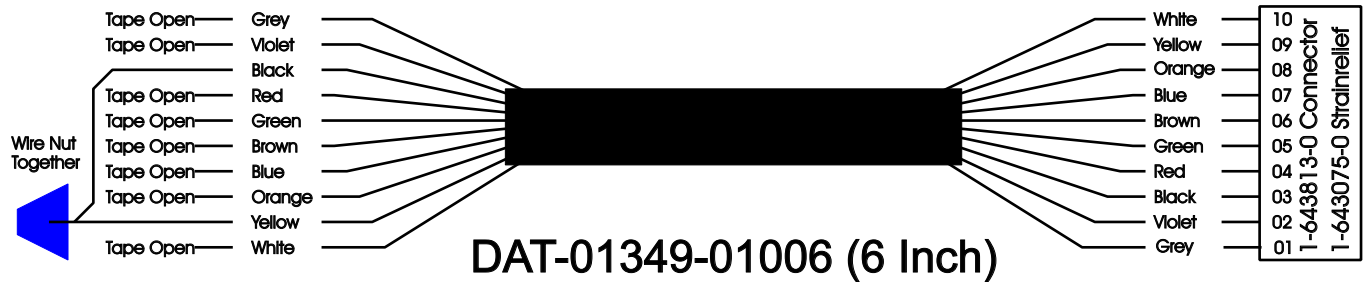
# *R. C. Tronics Incorporated*

**2573 East Kercher Road  
Goshen, Indiana 46528  
Toll Free 1-866-457-7790**

**DAT-01349-01006  
10 Conductor Data Cable**

**Phone 1-574-642-3857  
Fax 1-574-642-3858  
<http://www.rctronics.com>**

**Viewed with Tyco Connector Plug-In Face Down.**



***Enables "Emergency Master" for RCT-00786 or RCT-01414, Bus Power Center from J4 on RCT-01069, Dash Switch Center. When Switch #12 is not used.***

**Carol C-9540, 24 AWG, Stranded 7/32/10, Foil 24 AWG Gnd shielded ten conductor cable.  
Cut each jacket end 4 inches long, remove jacket on each end.  
Requires one (1) Tyco/Amp. 1-643814-0 connector & Tyco/Amp. 1-643075-0 end cap.  
Place connector into insertion equipment, start with #10 and complete with #1**

**Wire Nut; Black and Yellow together.**

**#1 GREY, #2 VIOLET, #3 BLACK, #4 RED, #5 GREEN**

**#6 BROWN, #7 BLUE, #8 ORANGE, #9 YELLOW, #10 WHITE**

D  
A  
T

1st three Letters = Data Cable

0  
0  
0  
0  
0

2nd five numbers = Print Number

0  
0

3rd two numbers = Configuration

0  
0

4th two numbers = Length In Feet

0

5th last digit = Length In Inches