

# *R. C. Tronics, Incorporated*

**Specializing In Electronic Controls**

**2573 East Kercher Road  
Goshen, Indiana 46526  
Toll Free 1-866-457-7790**

**Phone 1-574-642-3857  
Fax 1-574-642-3858  
<http://www.rctronics.com>**

## **Ambulance Power Center Type 2**



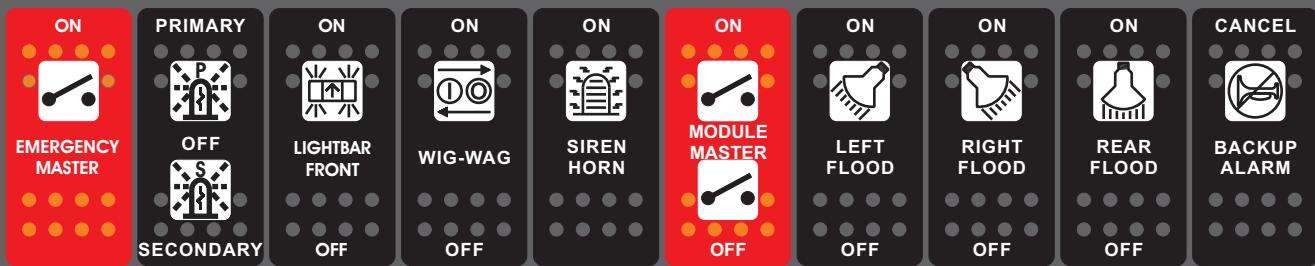
# R. C. Tronics Incorporated

2573 East Kercher Road  
Goshen, Indiana 46528  
Toll Free 1-866-457-7790

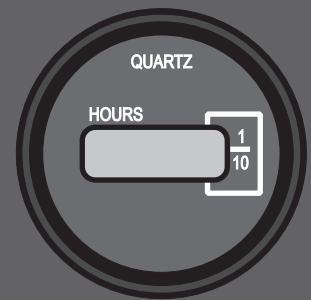
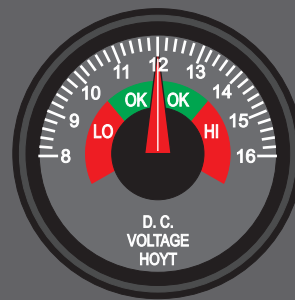
Phone 1-574-642-3857  
Fax 1-574-642-3858  
<http://www.rctronics.com>

## Dash Switch Assembly

COMPANY LOGO



Faceplate can be laser cut to your requirements.  
Mounting area for additional switches, meter's or controls.



METER'S SHOWN OPTIONAL

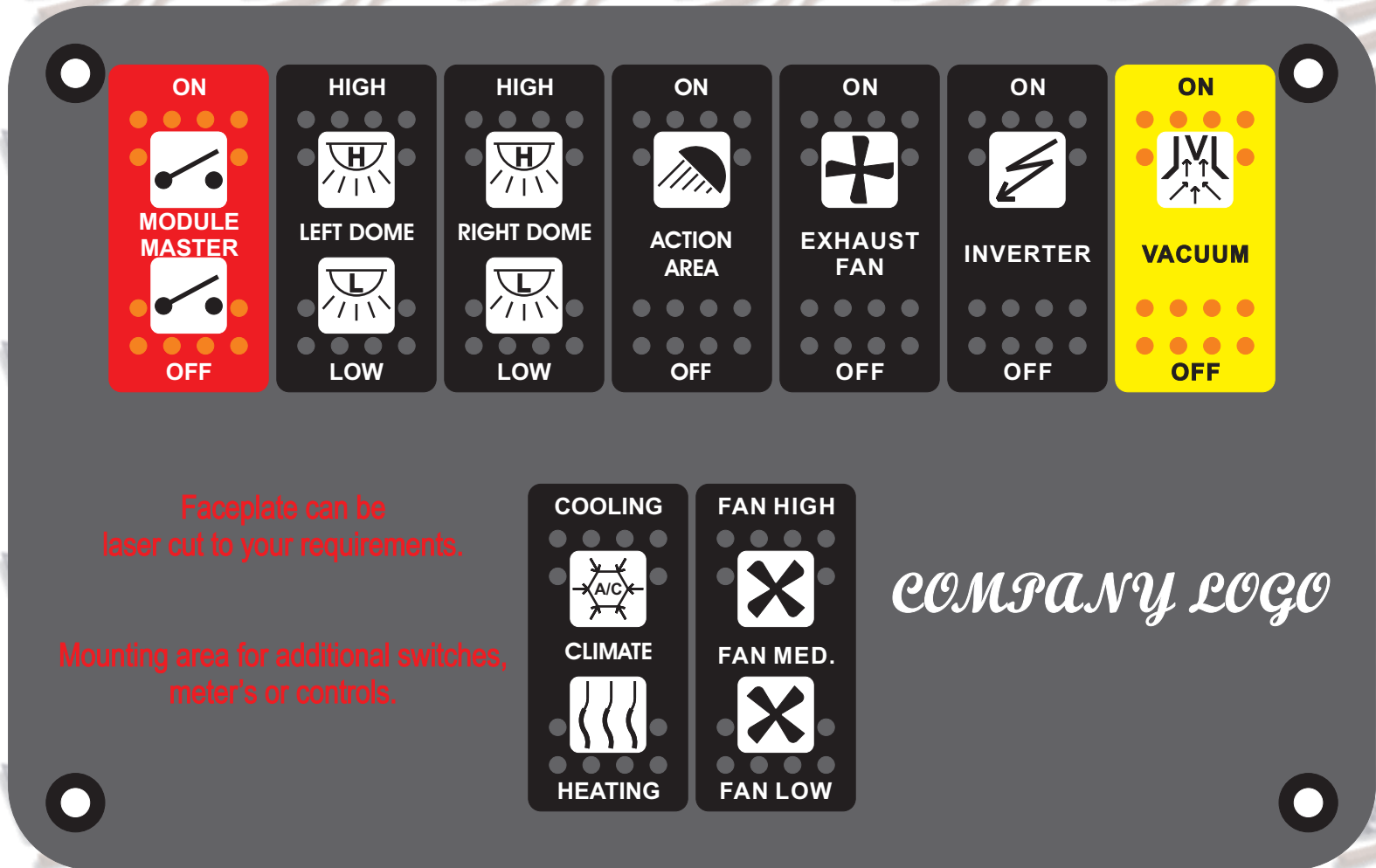
11.65 Inches(L-R) x 8.65 Inches(T-B) x 2 Inches(Deep)

# R. C. Ironics Incorporated

2573 East Kercher Road  
Goshen, Indiana 46528  
Toll Free 1-866-457-7790

Phone 1-574-642-3857  
Fax 1-574-642-3858  
<http://www.rcironics.com>

## Module Switch Assembly



Faceplate can be laser cut to your requirements.

Mounting area for additional switches, meter's or controls.

COMPANY LOGO

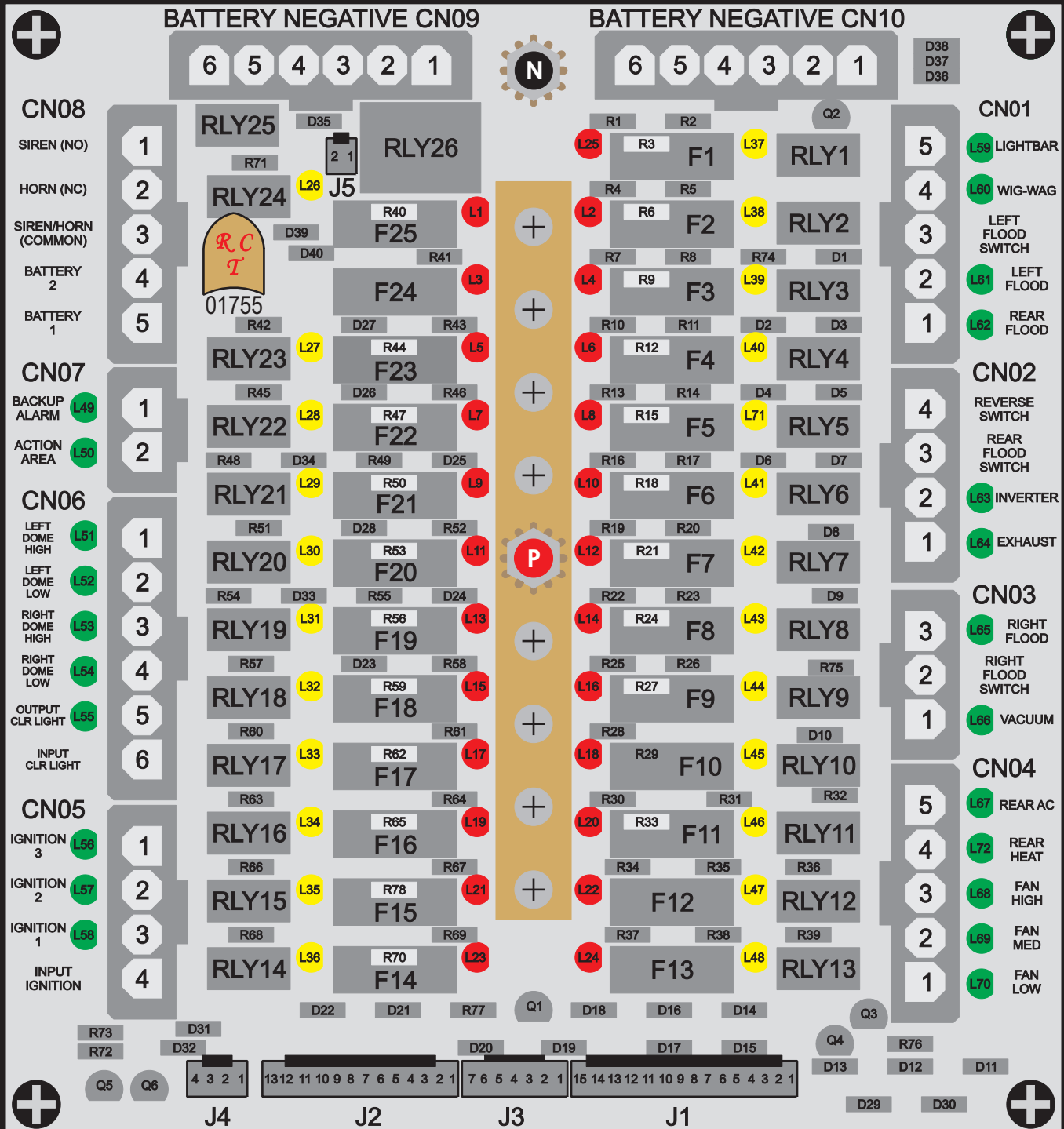
8.15 Inches(L-R) x 5.15 Inches(T-B) x 2 Inches(Deep)

# R. C. Tronics Incorporated

2573 East Kercher Road  
 Goshen, Indiana 46528  
 Toll Free 1-866-457-7790

Phone 1-574-642-3857  
 Fax 1-574-642-3858  
<http://www.rctronics.com>

## Power Center Assembly



8 Inches(L-R) x 8-1/2 Inches(T-B) x 2 Inches(Deep)

# **R. C. Tronics, Incorporated**

2573 East Kercher Road  
Phone 1-574-642-3857  
Toll Free 1-866-457-7790

[www.rctronics.com](http://www.rctronics.com)

Goshen, Indiana 46528  
Fax 1-574-642-3858  
Email; dchiddister@rctronics.com

## **PCB-01755 Ambulance Power Center Type 2 Dash Switch Assembly**

- 1. Emergency Master Switch. (Enables primary/secondary, light-bar and wig-wag switches. Horn/siren switch operates independent of Emergency Master Switch, all operate with ignition.)**
  - 2. Primary-Secondary Switch. (Provides sinking & sourcing signal with ignition)(PRI-SEC.)**
  - 3. Light-Bar Front Switch. (Relay 1 output, 12 VDC @ 30 ampere)(LBAR)**
  - 4. Wig-Wag Switch. (Relay 2 output, 12 VDC @ 30 ampere)(WAG.)**
  - 5. Siren Horn Switch. (Relay 24 output 12 VDC form C contact)(H/R)**
- 
- 1. Module Master Switch. (May be enabled on module switch assembly)(M/ON-M/OFF)**
  - 2. Left Flood Switch. (Relay 3 output, 12 VDC @ 30 ampere)(LFLD)**
  - 3. Right Flood Switch. (Relay 7 output, 12 VDC @ 30 ampere)(RFLD)**
  - 4. Rear Flood Switch. (Relay 4 output, 12 VDC @ 30 ampere)(BFLD)**
  - 5. Back-Up Alarm Cancel Switch. (Relay 23 output, 12 VDC output @ 30 ampere)(B/UP-R/SW)**

**Note: Left-Right-Rear floods will have respective door inputs to operate the flood lights associated with the opened door. Right door open will operate right dome high, left, rear door open will operate left dome high, Additionally, rear floods will operate when vehicle is placed into reverse.**

## **Module Switch Assembly**

- 1. Module Master Switch. (Module may be enabled on dash switch 2)(M/ON-M/OFF)**
  - 2. Left Dome, High-Low Switch. (Relays 20 & 21 output 12 VDC @ 30 Ampere)(L/LO-L/HI)**
  - 3. Right Dome, High-Low Switch. (Relays 18 & 19 output 12 VDC @ 30 Ampere)(R/LO-R/HI)**
  - 4. Action Area Switch. (Relay 22, output 12 VDC @ 30 ampere)(ACT.)**
  - 5. Vacuum (Suction) Switch. (Relay 8 output, 12 VDC @ 30 ampere)(VAC.)**
  - 6. Inverter Switch. (Relay 5 output, 12 VDC @ 30 ampere)(INV.)**
  - 7. Exhaust Fan Switch. (Relay 6 output, 12 VDC @ 30 ampere)(EXH.)**
- 
- 1. Rear Heat & A/C Switch. (Relay's 9 & 10 output, 12 VDC @ 30 ampere)(HEAT-AC)**
  - 2. Fan, Low-Med-High Switch. (Relays 11, 12 & 13 output 12 VDC @ 30 ampere)(F/LO-F/HI)**

**Note: Operating "Rear, Heat or A/C Switch will start fan at medium speed. The fan may then be switched to high or low speeds.**

**You may also wire the thermostat direct for automatic control.**

**Heating and cooling control switches can be mounted separately from dash and module switch assemblies.**

**Door Open, J5, Shows Left, Right or Rear door is open.**

*Clearance Light Relay Output. (Relay 17, 12 VDC @ 30 ampere.)  
Three ignition relays, 14, 15 & 16 provide three separate circuits for a total of 90 amperes,  
rated 12 VDC.*

*Two battery circuits provide a total of 60 amperes.*

*All fuses are monitored with a red indicator to provide visual indication of open fuse.*

*All energized relays depicted with amber indicators.*

*All outputs show power output with green indicators.*

*System completely “Plug-In-Play”. Provides rapid replacement of control.*

*All connections keyed, cannot interchange cabling.*

*All switches pad printed with staged lighting.*

**To order a complete system:**

- 1. RCT-01755-00000, Power Center. (RCT can install special fuse arrangement specified by end user.)**
- 2. RCT-XXXXX-XXXXX, Front Switch Panel, to include all pad printed switches and rear PCB-01752.**
- 3. RCT-XXXXX-XXXXX, Rear Switch Panel, to include all pad printed switches and rear PCB-01753.**
- 4. RCT-XXXXX-XXXXX, Heat/AC Switch Panel, to include both pad printed switches and rear PCB-01754. (PCB-01754 with pad printed switches may be mounted into front or rear switch assemblies. Data cable DAT-01XXX-01000 may be wired to thermostat. If done, item #4 may be omitted.)**
- 5. DAT-01350-00XX0 Fifteen Conductors. (J1/RCT-01755 to J1/PCB-01752 to front switch.)**
- 6. DAT-01758-00XX0, Thirteen Conductors. (J2/RCT-01755 to J1/PCB-01753 to rear switch.)**
- 7. DAT-01757-00XX0, Seven Conductors. (J3/RCT-01755 to J1/PCB-01754 to Heat/AC switch.)**
- 8. DAT-01347-01XX0, Four Conductors. (J4/RCT-01755 to Body Flasher.) or use (DAT-01347-03XX0 for RCT-00772, body flasher.)**
- 9. DAT-01345-00XX0, Two Conductors. (J5/RCT-01755 to Door Open Indicator.)**

**NOTE: Replace XX with desired cable length in feet.**

**MOLEX CONNECTOR KIT, RCT-MOLEX-00011**

**MOLEX CRIMPING TOOL, 63811-0400**

**MOLEX PIN EXTRACTOR TOOL, 63813-2700**

**MOLEX TERMINAL PIN, 43375-0001**

# ***R. C. Tronics, Incorporated***

2573 East Kercher Road  
Phone 1-574-642-3857  
Toll Free 1-866-457-7790

[www.rctronics.com](http://www.rctronics.com)

Goshen, Indiana 46528  
Fax 1-574-642-3858  
dchiddister@rctronics.com

## *PCB-01755 Ambulance Power Center*

### *CONNECTOR CN01*

- 1. Rear Flood Output.*
- 2. Left Flood Output.*
- 3. Left Flood Door Switch. (Operates left flood when taken to ground.)*
- 4. Wig-Wag Output.*
- 5. Light-Bar Output.*

### *CONNECTOR CN02*

- 1. Exhaust Output.*
- 2. Inverter Output.*
- 3. Rear Flood Switch. (Operates rear flood when taken to ground.)*
- 4. Reverse Switch. (Operates rear floods when +12 VDC supplied & operates back up alarm.)*

### *CONNECTOR CN03*

- 1. Vacuum Output.*
- 2. Right Flood Switch. (Operates right floods when + 12 VDC supplied.)*
- 3. Right Flood Output.*

### *CONNECTOR CN04*

- 1. Fan Low Output.*
- 2. Fan Medium Output.*
- 3. Fan High Output.*
- 4. Rear Heat Output.*
- 5. Rear AC.*

### *CONNECTOR CN05*

- 1. Ignition 3 Output.*
- 2. Ignition 2 Output.*
- 3. Ignition 1 Output.*
- 4. Ignition Input. (+12 VDC input from chassis.)*

### *CONNECTOR CN06*

- 1. Left Dome High Output.*
- 2. Left Dome Low Output.*
- 3. Right Dome High Output.*
- 4. Right Dome Low Output.*
- 5. Clearance Light Output.*
- 6. Clearance light Input. (+12 VDC input from chassis.)*

### *CONNECTOR CN07*

- 1. Back-Up Alarm Output.*
- 2. Action Area Output.*

### *CONNECTOR CN08*

1. *Siren (NO).*
2. *Horn (NC).*
3. *Horn/Siren (Common).*
4. *Battery 2*
5. *Battery 1*

*CONNECTOR CN09*

1. *Battery Negative.*
2. *Battery Negative.*
3. *Battery Negative.*
4. *Battery Negative.*
5. *Battery Negative.*
6. *Battery Negative.*

*CONNECTOR CN10*

1. *Battery Negative.*
2. *Battery Negative.*
3. *Battery Negative.*
4. *Battery Negative.*
5. *Battery Negative.*
6. *Battery Negative.*

*CONNECTOR J1, To Dash Switch PCB.*

1. *Right Flood Switch.*
2. *Rear Flood Switch.*
3. *Left Flood Switch.*
4. *Wig-Wag Switch.*
5. *Light-Bar Switch.*
6. *Reverse Switch. (+12 VDC chassis input.) (From CN02-4, Reverse Switch.)*
7. *Back-Up Alarm Cancel Switch.*
8. *Module Master Switch.(To J2-10)(Set to module ON.)*
9. *Module Master Switch.(To J2-9)(Set to module Off.)*
10. *Primary/Secondary Switch,(To J4-2)(Provides J4-4 with sink signal.)(Primary Signal)*
11. *Primary/Secondary Switch,(To J4-1)(Provides J4-3 with sink signal.)(Secondary Signal)*
12. *Not Used.*
13. *Ignition. (+12 VDC)*
14. *Battery Negative.*
15. *Module Master Enable with Ignition.(+12 VDC)*

*DATA CONNECTOR J2, To Module Switch PCB.*

1. *Vacuum (Suction) Switch.*
2. *Exhaust Switch.*
3. *Inverter Switch.*
4. *Right Dome Low Switch.*
5. *Right Dome High Switch.*
6. *Left Dome Low Switch.*
7. *Left Dome High Switch.*
8. *Fluorescent Light Switch.*
9. *Module Master Switch.(To J1-9)(Set to module OFF.)*
10. *Module Master Switch.(To J1-8)(Set to module ON.)*
11. *Battery Negative.*
12. *Module Master Enable with Ignition.(+12 VDC )*

*DATA CONNECTOR J3, AC-Heat PCB.*

- 1. Fan Low Switch.*
- 2. Fan High Switch.*
- 3. Rear Heat Switch.*
- 4. Rear AC Switch.*
- 5. Battery Negative.*
- 6. Ignition with Module Enable.(+12 VDC)*
- 7. Ignition. (+12 VDC)*

*DATA CONNECTOR J4, To Body Flasher or Strobe Packs.*

- 1. Primary/Secondary Switch; Provides, "12 VDC", "SECONDARY" Signal.(black)*
- 2. Primary/Secondary Switch; Provides, "12 VDC", "PRIMARY" Signal.(white)*
- 3. Primary/Secondary Switch; Provides "BATTERY NEGATIVE", "SECONDARY" Signal.(red)*
- 4. Primary/Secondary Switch; Provides "BATTERY NEGATIVE", "PRIMARY" Signal.(green)*

*DATA CONECTOR J5, To Door Open Indicator.*

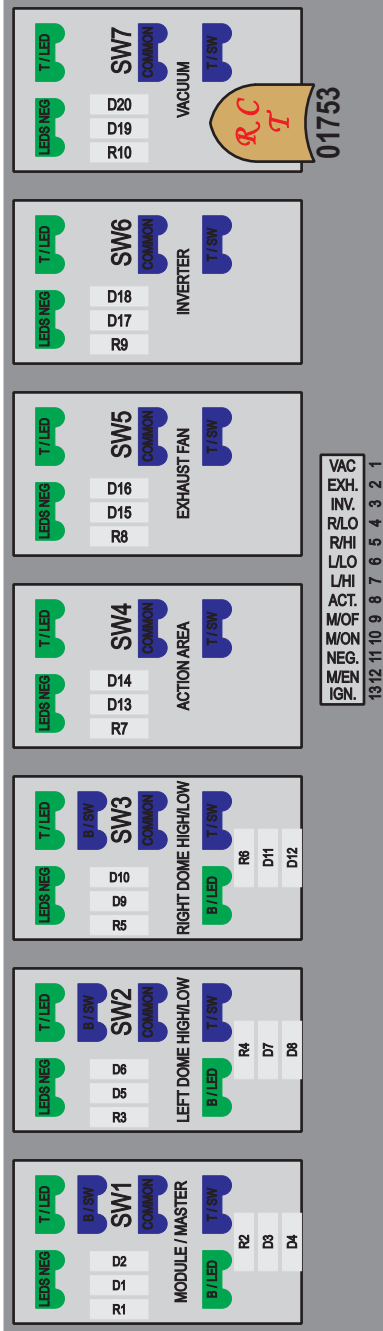
- 1. Door Open Signal, Left-Right-Rear Doors.(sink)*
- 2. Ignition (+12 VDC)*

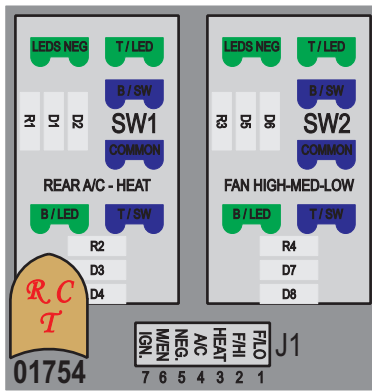


01752

- RFLD
- BFLD
- LFLD
- WAG
- LBAR
- RSW
- BUP
- MON
- M/OF
- PRI.
- SEC.
- H/R
- IGN.
- NEG.
- MEN

15 14 13 12 11 10 9 8 7 6 5 4 3 2 1





RC  
T

01754

J1  
F/O  
F/H  
HEAT  
A/C  
NEG  
MEN  
IGN  
7 6 5 4 3 2 1

# *R.C. Electronics Incorporated*

## **SPECIALIZING IN ELECTRONIC CONTROLS**

2573 East Kercher Road  
Phone 1-574-642-3857  
Toll Free 1-866-457-7790

GOSHEN, IN 46528  
Fax 1-574-642-3858  
<http://www.rcronics.com>



### **Custom Design of Electronic Controls**

#### *Speciality Vehicles*

Fire Apparatus Systems  
Police Vehicle Systems  
Transit Bus Systems  
Ambulance Systems

### **Printed Circuit Board Layout**

Computer Generated Artwork  
FR-4 PCB Material  
Double-Sided Plated-Thru Hole

### **Complete Manufacturing Facility**

New Era Wave Soldering Machine  
Technical Devices PCB Cleaner  
Automated PCB Insertion Equipment  
Universal Laser System, Custom Faceplates  
K .F. Hot Stamp Machine

**Permit us to solve your Electrical / Electronic Control needs.**